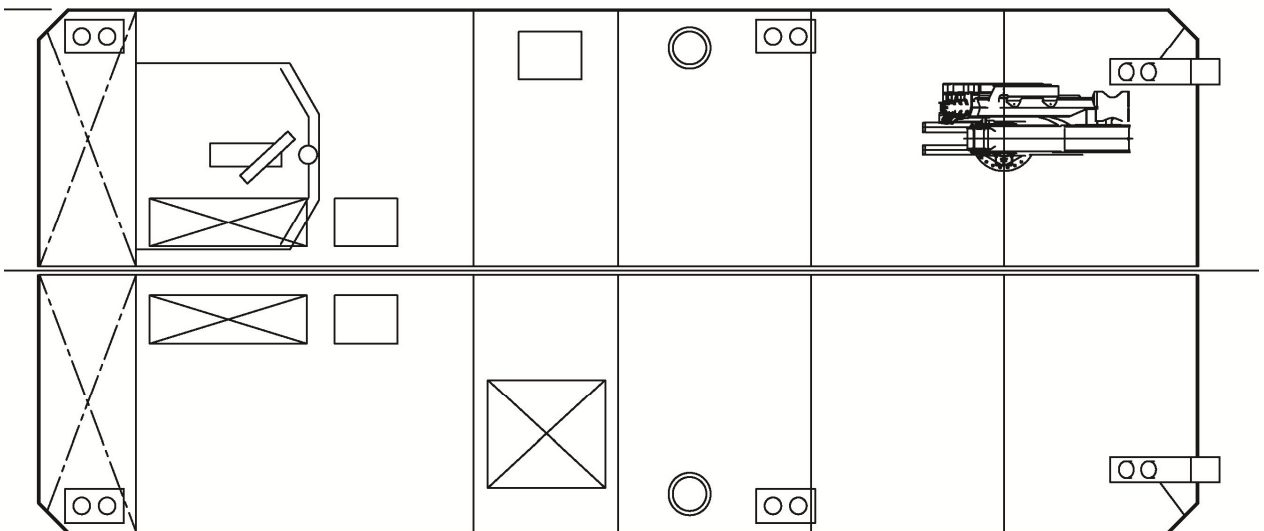
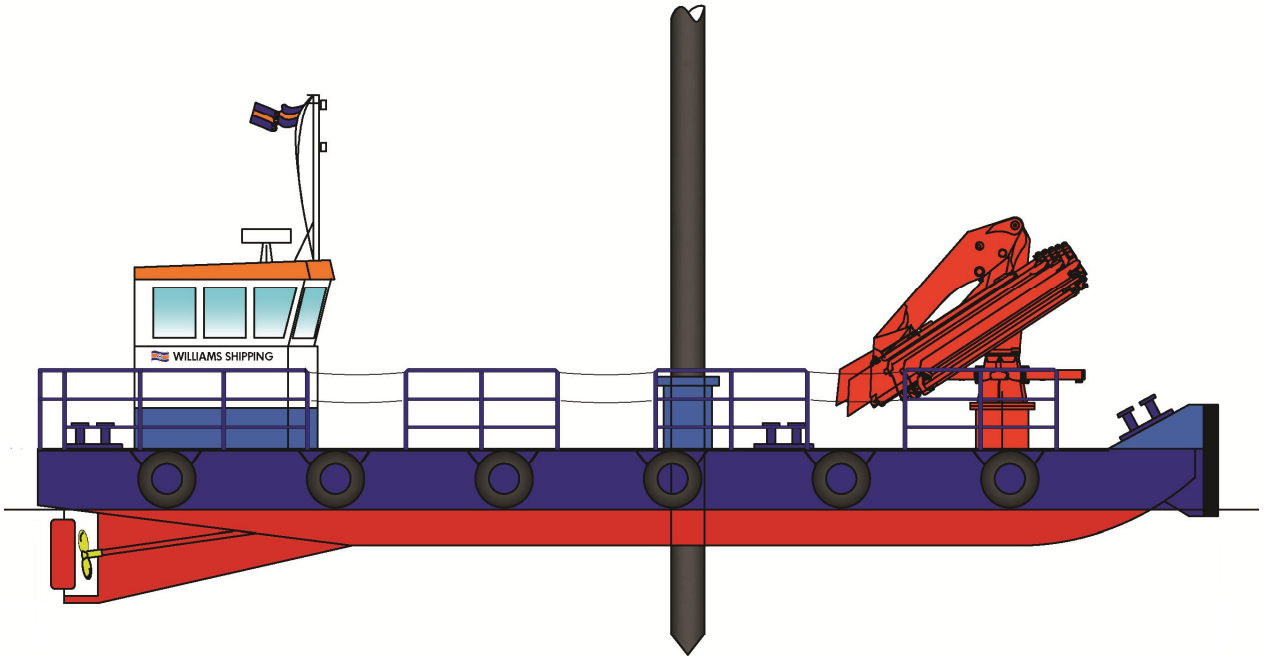
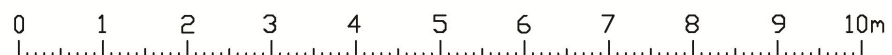


# ROAD-TRANSPORTABLE WORKBOAT

WILCAT



Scale



# ROAD-TRANSPORTABLE WORKBOAT

WILCAT



## GENERAL

Type of Vessel:	Road Transportable Multicat type vessel
Builder:	Bailey & Boynton, UK
Build Date, Place:	1986, UK
Certification:	MCA Workboat Code Cat 3 (20 miles) 2 crew, 4 pax

## DIMENSIONS

Length O.A.:	14m
Beam O.A.:	6.4m
Depth at Sides:	1.3m
Draft Aft:	1.1m
Working Air Draft:	3.4m

## PERFORMANCE

Free Running Speed:	8 knots (approx)
Bollard Pull:	2t (approx)
Deck Carrying Capacity:	25t

## PROPULSION SYSTEM

Main Engines:	2x Sabre Perkins M130C
Total Power:	260HP/192Kw @ 2600rpm
Marine Transmissions:	PRM 500
Propulsion:	2x 762mm 4-blade fixed pitch props

## AUXILIARY EQUIPMENT

240v Power:	Inverter
Fuel Transfer Pumps:	52lpm 3m head (max 10m head)
Electrical System:	12V DC

## DECK EQUIPMENT

Hydraulic Crane:	Palfinger PK23080 — 23t.m (with seat)
Capacity:	4.8t@4.2m / 1.6t@12.1m
Tow Post	
Wooden Deck Protection	
Removable Bow Boards	

## OPTIONAL EQUIPMENT

Spud Legs (x2):	10.5m long x 439mm diameter
Winch:	North Sea Winches 7t (100m @ 20mm)
Burning / Cutting Gear:	Optional
Compressors:	Optional
Containers and Cabins:	Optional (6ft to 20ft)

## TANK CAPACITIES

Fuel Bunkers:	2 x 600ltr
Fuel Cargo:	1 x 1800ltr

## ACCOMMODATION

Wheelhouse with bench seat.

## NAVIGATION & COMMUNICATION EQUIPMENT

Searchlight:	Francis
Compass:	Sestrel
Radar:	Furuno M1623
GPS:	Furuno GP30
Echo Sounder:	Vetus
VHF Radio:	Icom IC-M411 DSC
Handheld VHF:	Icom IC-M71
AIS:	AMEC Camino-101 Class B Transponder

## ROAD SPECIFICATION

Length x Breadth:	2 hulls @ 14m x 3m )
Air Draft:	Port Hull: 3.8m / S'board Hull 2.7m
Transport Weight:	Port Hull: 24t / S'board Hull 4t